

# www.flautodolce.it (2008)

## Sonata a Flauto e Cembalo in F Maj.

from *Mu. Ms. 261*, Fitzwilliam Museum, Cambridge

George Frideric Handel (1685 - 1759)

### 1. Grave

Flauto dolce

Basso

7

13

19

25

31

38

The image shows a musical score for a flute and bassoon. It consists of seven systems of music, each with a treble clef staff for the flute and a bass clef staff for the bassoon. The key signature is one flat (F major) and the time signature is 3/4. Fingerings are indicated by numbers 1-5 on the hands. Measure numbers 7, 13, 19, 25, 31, and 38 are marked at the beginning of their respective systems. The score ends with a double bar line at the end of the 40th measure.

*www.flauto-dolce.it (2008)*

2. Allegro

Musical score for Flauto Dolce, measures 1-17. The score is in 2/4 time and B-flat major. It features a treble and bass staff. The bass line includes fingerings (6) and trills (tr). Measure numbers 3, 6, 9, 12, 14, and 17 are indicated at the start of their respective systems.

*www.flauto-dolce.it (2008)*

20

6 6 6

23

7 7 6 7 6 6 7

26

6 6/5 3 6 7 6 6 6 6 6/5

**3. Alla siciliana**

#6 6 4 # # 6 6 6 4 3

3

7 6 6 # 6 #6 6 6/4 5# 6/5 6 6/4 5/3 6 6

6

6/4 6/2 6/5 # 4 3 6 7 7 7 7 7 # 6/5 6 6

9

6/5 6/4 6 6/4 5# 7 6 7 6 4 3 4 # 7 6 #

*www.flauto-dolce.it (2008)*

**4. Allegro**

Musical score for Flauto Dolce, measures 1-17. The score is in 12/8 time and B-flat major. It consists of a treble and bass staff. Fingerings are indicated by numbers 1-5. Measure numbers 3, 6, 9, 12, 15, and 17 are marked at the beginning of their respective systems. The piece is marked '4. Allegro'.

*www.flauto-dolce.it (2008)*

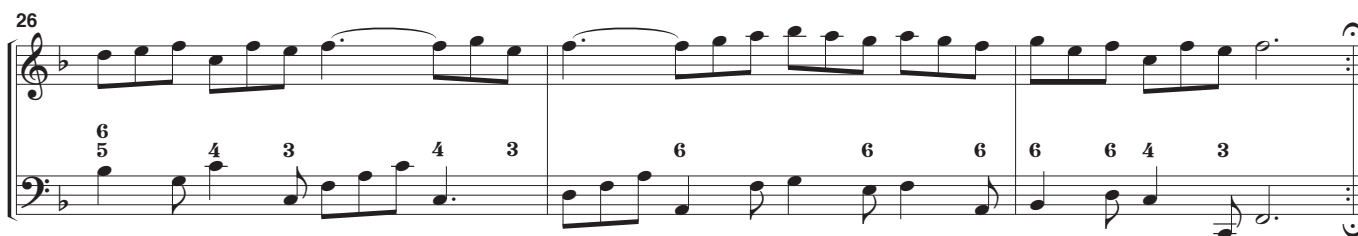
20



23



26

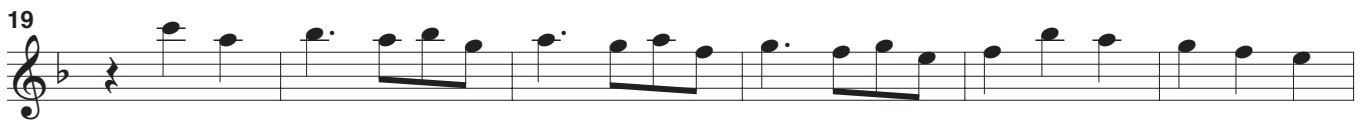


# Sonata a Flauto e Cembalo in F Maj.

from *Mu. Ms. 261*, Fitzwilliam Museum, Cambridge

George Frideric Handel (1685 - 1759)

## 1. Grave



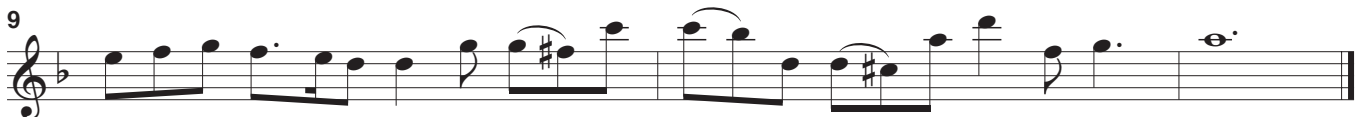
## 2. Allegro



*www.flauto-dolce.it (2008)*



**3. Alla siciliana**



*www.flauto-dolce.it (2008)*

**4. Allegro**

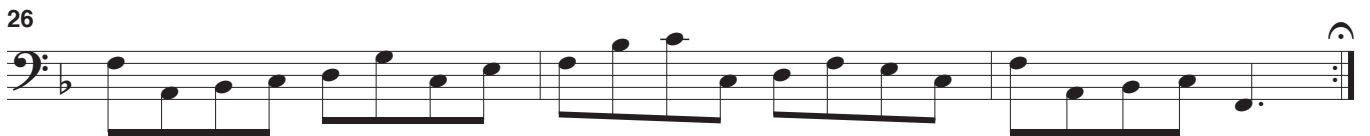
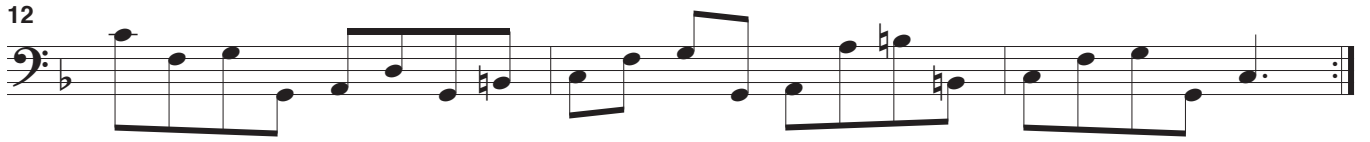
Musical score for Flauto Dolce, 4. Allegro, measures 1-26. The score is written in treble clef, B-flat major, and 12/8 time. It consists of ten staves of music. The first staff (measures 1-2) shows a steady eighth-note pattern. The second staff (measures 3-5) features a triplet of eighth notes. The third staff (measures 6-8) continues the eighth-note pattern with some chromatic movement. The fourth staff (measures 9-11) includes a repeat sign and a chromatic descending line. The fifth staff (measures 12-14) has a triplet of eighth notes and a sixteenth-note flourish. The sixth staff (measures 15-16) features a dotted quarter note followed by eighth notes. The seventh staff (measures 17-19) continues the eighth-note pattern. The eighth staff (measures 20-22) has a triplet of eighth notes. The ninth staff (measures 23-25) continues the eighth-note pattern. The tenth staff (measures 26) concludes with a final note and a repeat sign.







*www.flauto-dolce.it (2008)*



**3. Alla siciliana**



*www.flauto-dolce.it (2008)*

#### 4. Allegro

