

Solo X

from *Essercizii musici* (Hamburg [1740])

Georg Philipp Telemann (1681 - 1767)

1. Adagio

Flauto dolce

Basso

5 Allegro

8

11

14

17

www.flauto-dolce.it (2008)

21 *Adagio*

Musical notation for measures 21-24, Adagio tempo. The system consists of a treble clef staff and a bass clef staff. The treble staff contains a melodic line with eighth and sixteenth notes, including slurs and a fermata. The bass staff contains a bass line with notes and rests. Fingerings are indicated by numbers 6, 6#, 6, 7, and #6.

25 *Allegro*

Musical notation for measures 25-27, Allegro tempo. The system consists of a treble clef staff and a bass clef staff. The treble staff contains a fast-moving melodic line with sixteenth notes and slurs. The bass staff contains a bass line with notes and rests.

Musical notation for measures 28-30, Allegro tempo. The system consists of a treble clef staff and a bass clef staff. The treble staff contains a fast-moving melodic line with sixteenth notes and slurs. The bass staff contains a bass line with notes and rests. Fingerings are indicated by 7 6 5 and 7 6 5.

Musical notation for measures 31-33, Allegro tempo. The system consists of a treble clef staff and a bass clef staff. The treble staff contains a fast-moving melodic line with sixteenth notes and slurs. The bass staff contains a bass line with notes and rests. Fingerings are indicated by 7, 6, 6, 6, 6, 6, 5, and 5.

Musical notation for measures 34-36, Allegro tempo. The system consists of a treble clef staff and a bass clef staff. The treble staff contains a fast-moving melodic line with sixteenth notes and slurs. The bass staff contains a bass line with notes and rests. Fingerings are indicated by 6, 6, 5, 5, #4, 2, and 6.

Musical notation for measures 37-38, Allegro tempo. The system consists of a treble clef staff and a bass clef staff. The treble staff contains a fast-moving melodic line with sixteenth notes and slurs. The bass staff contains a bass line with notes and rests. Fingerings are indicated by 7, 6, 5, 5, #4, 2, and 6.

Musical notation for measures 39-40, Allegro tempo. The system consists of a treble clef staff and a bass clef staff. The treble staff contains a fast-moving melodic line with sixteenth notes and slurs. The bass staff contains a bass line with notes and rests. Fingerings are indicated by 6, 6, 6, and 6.

www.flauto-dolce.it (2008)

41

7 6

44

47

6 6 6 6/4 6/4 6/4

50

6 6 7 6 6

53

6 6 6 7 6 6

56

6 6

www.flauto-dolce.it (2008)

2. Larghetto

6

4
2

6
4

6
5

6
4

5
4

6

5

6

6

6

6
5

9

6

4
2

6
4

6
5

6
4

5
3

14

6

6

6
5

6
5

6

6

6
5

6

18

6
5

6
5

22

6

4
2

6
4

6
5

6
4

5
4

26

6

6

6

6

6
5

6

6

6

6

www.flauto-dolce.it (2008)

3. Vivace

5

9

12

16

20

24

1.

2.

www.flauto-dolce.it (2008)

27

32

36

41

45

49

53

Solo X

from *Essercizii musici* (Hamburg [1740])

Georg Philipp Telemann (1681 - 1767)

1. Adagio

Flauto dolce

3

5 *Allegro*

7

9

11

13

15

17

19

www.flauto-dolce.it (2008)

21 *Adagio*



25 *Allegro*

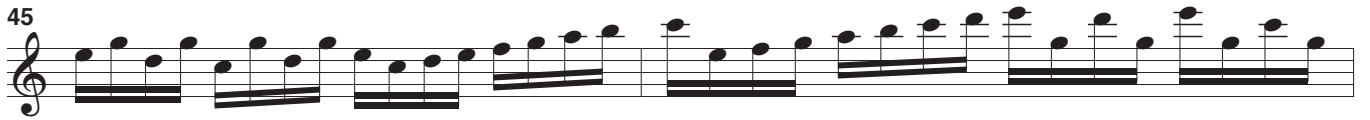


www.flauto-dolce.it (2008)

43




45



47



49



51



53



55



57



www.flauto-dolce.it (2008)

2. Larghetto

1

3

6

9

12

15

19

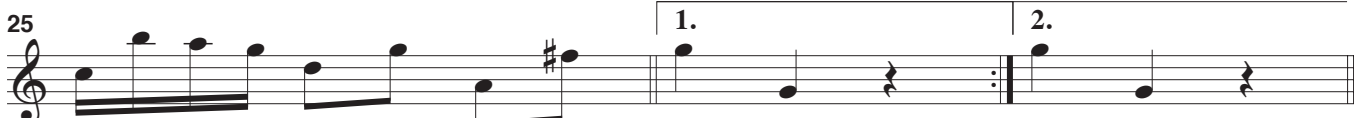
22

25

28

www.flauto-dolce.it (2008)

3. Vivace



www.flauto-dolce.it (2008)

27



30



33



36




39



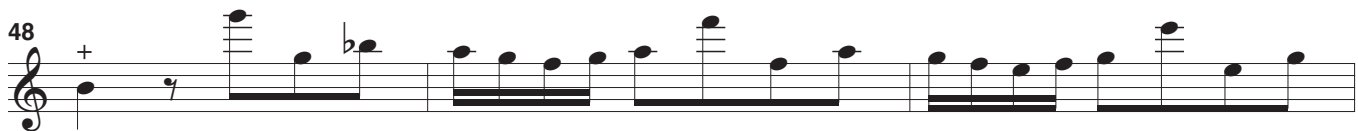
42



45



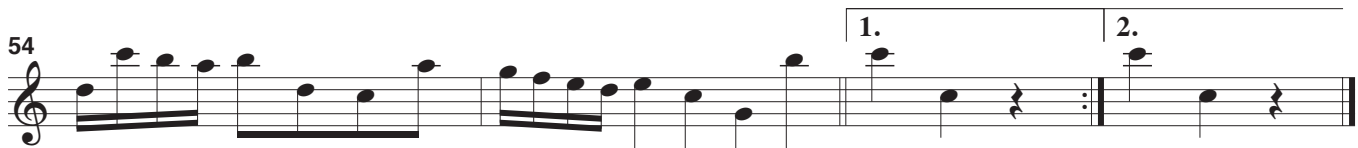
48



51



54



Solo X

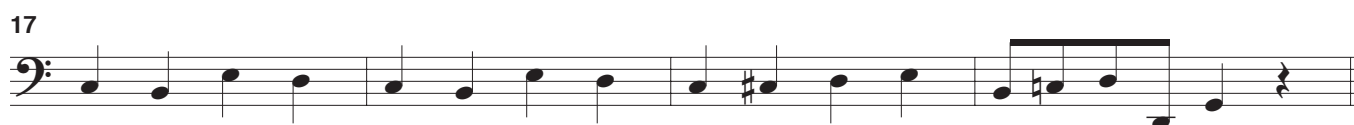
from *Essercizii musici* (Hamburg [1740])

Georg Philipp Telemann (1681 - 1767)

1. Adagio



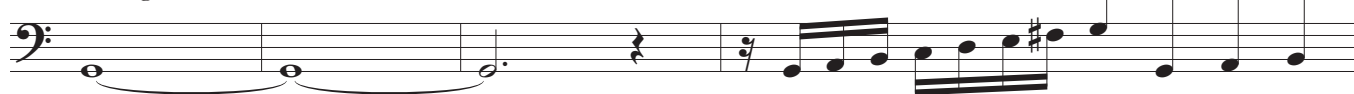
5 *Allegro*



21 *Adagio*



25 *Allegro*



www.flauto-dolce.it (2008)

39

43

47

51

55

2. Larghetto

5

10

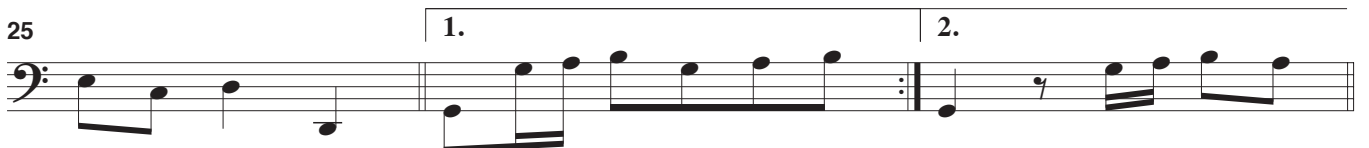
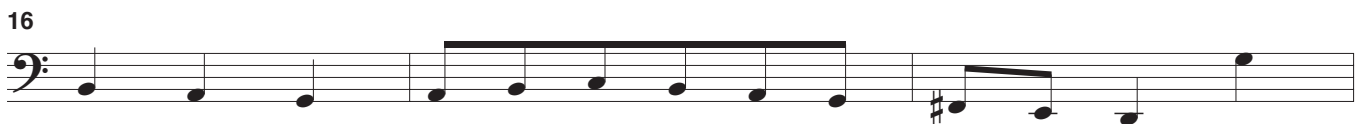
15

20

26

www.flauto-dolce.it (2008)

3. Vivace



www.flauto-dolce.it (2008)

27

30

33

36

39

42

45

48

51

54